



## TECHNICAL DATA Physical Specifications

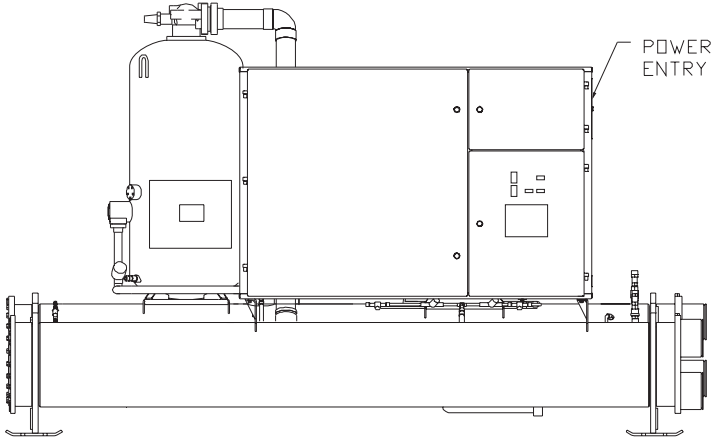
Model	ZKEW-U	19R	20R	23R	24R	27R	30T	36T	38T	40T	41R
Nominal Capacity	TR	133.3	164.5	186.6	202.4	220.8	249.0	292.9	271.3	331.1	332.8
	kW	468.8	578.5	656.3	711.8	776.6	875.7	1030.1	954.2	1164.5	1170.5
Nominal Power Input	kW	78.8	96.0	106.7	117.7	126.0	145.7	166.2	154.0	189.5	188.1
Energy efficiency	kW/TR	0.591	0.584	0.572	0.582	0.571	0.585	0.567	0.568	0.572	0.565
	COP	5.95	6.03	6.15	6.05	6.16	6.01	6.20	6.20	6.15	6.22
Min. % Unit Capacity		20%	20%	20%	20%	20%	20%	20%	10%	10%	20%
No Of Refrigerant Circuit		1									
Power Supply	V/PH/Hz	380-415/3/50, 380/3/60, 460/3/60, 575/3/60									
<b>Compressor</b>											
Model (Qty)		1220(1)	1222(1)	1222(1)	1227(1)	1227(1)	1230(1)	2233(1)	1220(2)	1222(2)	2236 (1)
<b>Evaporator</b>											
Model		FAR	EAR	JAR	JBR	6DR	6ER	7CR	6CR	8BR	7BR
Water Connection	Inch	8	6	8	8	8	8	8	8	10	10
Design Press. Water Side	psig	150									
	kPa	1034									
Flow rate	USgpm	319.2	393.8	446.9	484.7	528.8	596.1	701.3	649.5	792.8	796.9
	m <sup>3</sup> /h	72.5	89.4	101.4	110.0	120.0	135.3	159.1	147.4	180.0	180.9
Pressure Drop	ft wg	4.4	9.5	9.7	9.9	8.5	9.5	10.1	11.1	10.1	10.4
	kPa	13.1	28.3	29.0	29.6	25.5	28.3	30.3	33.1	30.3	31.0
<b>Condenser</b>											
Model		D2R	5BR	5BR	5CR	6CR	1KR	RAR	K5R	M3R	M1R
Water Connection	Inch	6	6	6	6	6	8	8	8	10	10
Design Press. Water Side	psig	150									
	kPa	1034									
Flow Rate	USgpm	402.3	495.6	560.7	609.5	663.2	750.3	879.0	814.1	994.8	998.3
	m <sup>3</sup> /h	91.3	112.5	127.3	138.4	150.5	170.3	199.5	184.8	225.8	226.6
Pressure Drop	ft wg	7.8	10.6	12.9	11.5	12.0	11.5	12.5	15.2	14.1	12.0
	kPa	23.4	31.7	38.6	34.5	35.9	34.5	37.2	45.5	42.1	35.9
<b>General</b>											
Unit Length	Inch	117 7/8	149 7/8	149 7/8	149 7/8	150 3/8	156 1/8	174 7/16	169 1/8	170 5/8	174 7/16
	mm	2990	3810	3810	3810	3820	3970	4430	4300	4330	4430
Unit Width	Inch	56 1/16	53 3/8	55 5/8	55 5/8	56 1/8	57 1/8	70	56 15/16	63 11/16	70
	mm	1420	1360	1410	1410	1430	1450	1780	1450	1620	1780
Unit Height	Inch	99	99	99	99	99	99	92 1/8	99	99	94 1/8
	mm	2520	2520	2520	2520	2520	2520	2340	2520	2520	2390
Unit Shipping Weight	lbs	7625	7876	8429	8764	9411	10291	13332	13195	15210	14328
	kg	3458	3572	3823	3975	4268	4667	6046	5984	6898	6498
Unit Operating Weight	lbs	8372	8737	9350	9761	10509	11518	14891	14619	17027	16092
	kg	3797	3962	4240	4427	4766	5223	6753	6630	7722	7298
R134a Charge (Approx)	lbs	419	529	558	584	705	750	981	882	1014	1102
	kg	190	240	253	265	320	340	445	400	460	500

Notes: 1. The above data are for Superior models with 2-pass evaporator and condenser which rated in accordance with AHRI Standard 550/590 (I-P)-2015 at standard conditions. The standard rating conditions are as below:  
 Chilled Water Inlet/Outlet Temperature 54/44°F [12.2/6.7°C]; Cooling Water Inlet/Outlet Temperature 85/94.3°F [29.4/34.6°C]; evaporator fouling factor 0.0001hr.ft<sup>2</sup>.°F/Btu [0.018 m<sup>2</sup>.K/kW]; condenser fouling factor 0.00025 hr.ft<sup>2</sup>.°F/Btu [0.044 m<sup>2</sup>.K/kW].

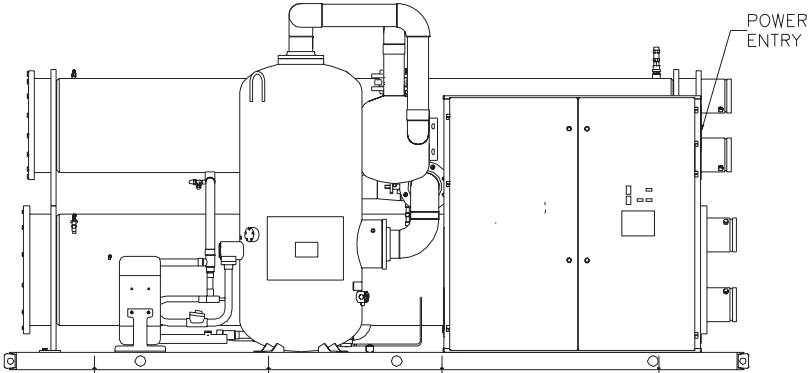
2. Please consult factory for the details of the unit with UL certified VFD.

# POWER ENTRY LOCATION

- a.) ZKEW-U19R  
ZKEW-U20R  
ZKEW-U23R  
ZKEW-U24R  
ZKEW-U27R  
ZKEW-U30R  
ZKEW-U38T  
ZKEW-U40T  
ZKEW-U46T

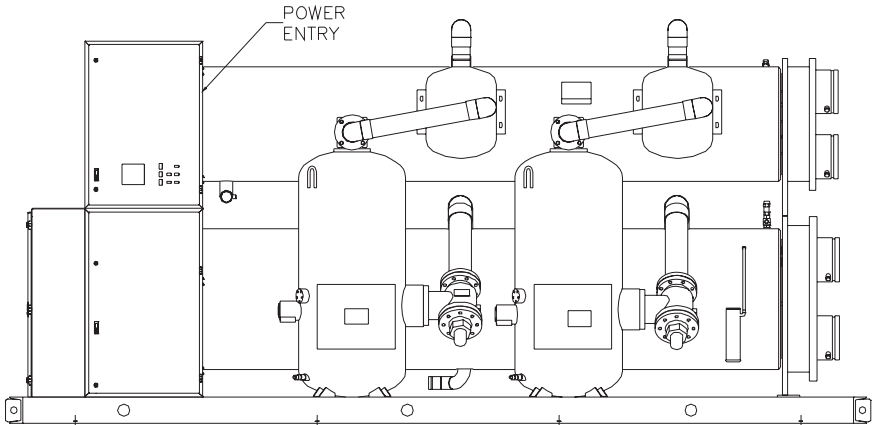


- b.) ZKEW-U36R  
ZKEW-U41R  
ZKEW-U46R



- c.)

- ZKEW-U50T  
ZKEW-U54T  
ZKEW-U57T  
ZKEW-U60T  
ZKEW-U73T  
ZKEW-U75T  
ZKEW-U81T  
ZKEW-U87T  
ZKEW-U90T



# Physical Specifications



Model	ZKEW-U	46R	46T	50T	54T	57T	60T	73T	75T	81T	87T	90T
Nominal Capacity	TR	376.6	375.7	410.2	445.0	475.0	504.6	583.4	623.2	666.5	708.6	748.8
	kW	1324.5	1321.3	1442.7	1565.1	1670.6	1774.7	2051.8	2191.8	2344.1	2492.1	2633.5
Nominal Power Input	kW	210.0	210.9	230.0	249.7	267.5	285.6	334.1	356.0	377.1	395.0	425.5
Energy Efficiency	kW/TR	0.558	0.561	0.561	0.561	0.563	0.566	0.573	0.571	0.566	0.557	0.568
	COP	6.31	6.27	6.27	6.27	6.25	6.21	6.14	6.16	6.22	6.31	6.19
Min. % Unit Capacity		20%	10%	10%	10%	10%	10%	10%	10%	10%	10%	10%
No Of Refrigerant Circuit		1										
Power Supply	V/PH/Hz	380-415/3/50, 380/3/60, 460/3/60, 575/3/60										
<b>Compressor</b>												
Model (Qty)		2246 (1)	1222 (2)	1222 (1) 1227 (1)	1227 (2)	1227 (1) 1230 (1)	1230 (2)	2233 (2)	2233 (1) 2236 (1)	2236 (2)	2236(1) 2246(1)	2246 (2)
<b>Evaporator</b>												
Model		8DR	8DR	KBR	YAR	YBR	YCR	MAR	MBR	NAR	PAR	PAR
Water Connection	Inch	10	10	10	10	10	10	12	12	12	12	12
Design Press. Water Side	psig	150										
	kPa	1034										
Flow Rate	USgpm	901.7	899.7	982.1	1065.5	1137.3	1208.3	1397.0	1492.2	1595.9	1696.7	1792.8
	m <sup>3</sup> /h	204.7	204.2	222.9	241.8	258.2	274.3	317.2	338.7	362.3	385.2	406.8
Pressure Drop	ft wg	13.4	11.3	10.8	11.1	11.3	11.8	12.2	12.7	11.3	13.6	15.0
	kPa	40.0	33.8	32.4	33.1	33.8	35.2	36.5	37.9	33.8	40.7	44.8
<b>Condenser</b>												
Model		M5R	M5R	T5R	YAR	YBR	YCR	JAR	JBR	KAR	7CR	8AR
Water Connection	Inch	10	10	10	10	10	10	12	12	12	12	12
Design Press. Water Side	psig	150										
	kPa	1034										
Flow Rate	USgpm	1127.4	1125.8	1228.9	1333.4	1423.9	1513.8	1753.1	1871.9	1999.4	2121.3	2247.4
	m <sup>3</sup> /h	255.9	255.6	280.0	302.7	323.2	343.6	398.0	424.9	453.9	481.5	510.2
Pressure Drop	ft wg	13.1	12.0	12.7	12.2	12.7	12.9	14.5	13.4	12.5	15.2	15.5
	kPa	39.3	35.9	37.9	36.5	37.9	38.6	43.4	40.0	37.2	45.5	46.2
<b>General</b>												
Unit Length	Inch	174 7/16	170 5/8	196 3/4	196 3/4	196 3/4	196 3/4	206 11/16	206 11/16	206 11/16	213 3/4	213 3/4
	mm	4430	4330	5000	5000	5000	5000	5250	5250	5250	5430	5430
Unit Width	Inch	75 3/16	64 11/16	80	80	80	80	88 3/16	88 3/16	88 3/16	90 3/16	90 3/16
	mm	1910	1640	2030	2030	2030	2030	2240	2240	2240	2290	2290
Unit Height	Inch	96 7/8	99	92	97	97	97	99 3/16	99 3/16	96 1/16	98 13/16	98 13/16
	mm	2460	2520	2340	2460	2460	2460	2520	2520	2440	2510	2510
Unit Shipping Weight	lbs	15311	15786	18189	19744	20255	20810	24843	25419	28165	30101	31115
	kg	6944	7159	8249	8954	9186	9437	11267	11528	12773	13651	14111
Unit Operating Weight	lbs	17302	17796	20343	22178	22777	23437	27726	28491	31642	34068	35231
	kg	7847	8071	9226	10058	10330	10629	12574	12921	14350	15450	15978
R134a Charge (Approx)	lbs	1113	1113	1312	1356	1422	1477	1455	1543	1808	2701	2701
	kg	505	505	595	615	645	670	660	700	820	1225	1225

Notes: 1. The above data are for Superior models with 2-pass evaporator and condenser which rated in accordance with AHRI Standard 550/590 (I-P)-2015 at standard conditions. The standard rating conditions are as below:  
 Chilled Water Inlet/Outlet Temperature 54/44°F [12.2/6.7°C]; Cooling Water Inlet/Outlet Temperature 85/94.3°F [29.4/34.6°C]; evaporator fouling factor 0.0001hr.ft<sup>2</sup>.°F/Btu [0.018 m<sup>2</sup>.K/kW]; condenser fouling factor 0.00025 hr.ft<sup>2</sup>.°F/Btu [0.044 m<sup>2</sup>.K/kW].  
 2. Please consult factory for the details of the unit with UL certified VFD.



## Electrical Data

Power Supply		380Vac ± 10% -3Ph-50Hz					400Vac ± 10% -3Ph-50Hz				
Model ZKEW-U	Compressor Model	Unit			Compressor		Unit			Compressor	
		RLA	MCA	MFS	RLA	LRA	RLA	MCA	MFS	RLA	LRA
ZKEW-U19R	1220 (1)	146	183	250	146	733	140	175	300	140	696
ZKEW-U20R	1222 (1)	180	225	350	180	929	175	218	350	175	883
ZKEW-U23R	1222 (1)	200	250	400	200	929	190	237	400	190	883
ZKEW-U24R	1227 (1)	219	274	400	219	1140	208	260	450	208	1083
ZKEW-U27R	1227 (1)	236	295	450	236	1140	225	281	500	225	1083
ZKEW-U30R	1230 (1)	271	339	500	271	1320	254	317	500	254	1254
ZKEW-U36R	2233 (1)	310	388	600	310	1477	292	365	600	292	1403
ZKEW-U38T	1220 (2)	290	326	400	145	733	278	312	450	139	696
ZKEW-U40T	1222 (2)	354	398	500	177	929	348	391	500	174	883
ZKEW-U41R	2236 (1)	352	440	700	352	1762	337	421	700	337	1674
ZKEW-U46R	2246 (1)	392	490	800	392	2111	384	480	800	384	2005
ZKEW-U46T	1222 (2)	394	443	500	197	929	376	423	600	188	883
ZKEW-U50T	1222 (1)				233	929				223	883
	1227 (1)	424	482	630	191	1140	411	467	700	188	1083
ZKEW-U54T	1227 (2)	468	527	630	234	1140	448	504	700	224	1083
ZKEW-U57T	1227 (1)				266	1140				253	1083
	1230 (1)	502	569	700	236	1320	477	541	800	224	1254
ZKEW-U60T	1230 (2)	534	601	700	267	1320	507	570	800	253	1254
ZKEW-U73T	2233 (2)	618	695	800	309	1477	586	659	800	293	1403
ZKEW-U75T	2233 (1)				356	1477				338	1403
	2236 (1)	663	752	800	307	1762	631	716	1000	293	1674
ZKEW-U81T	2236 (2)	704	792	1000	352	1762	676	761	1000	338	1674
ZKEW-U87T	2236 (1)				403	1762				383	1674
	2246 (1)	756	857	1000	353	2111	719	815	1200	336	2005
ZKEW-U90T	2246 (2)	792	891	1000	396	2111	768	864	1200	384	2005

Power Supply		460Vac ± 10% -3Ph-60Hz					575Vac ± 10% -3Ph-60Hz				
Model ZKEW-U	Compressor Model	Unit			Compressor		Unit			Compressor	
		RLA	MCA	MFS	RLA	LRA	RLA	MCA	MFS	RLA	LRA
ZKEW-U19R	1220 (1)	122	153	250	122	608	88	110	175	88	484
ZKEW-U20R	1222 (1)	153	191	300	153	771	108	135	225	108	613
ZKEW-U23R	1222 (1)	166	207	350	166	771	120	150	250	120	613
ZKEW-U24R	1227 (1)	182	227	400	182	946	131	164	250	131	752
ZKEW-U27R	1227 (1)	196	245	400	196	946	142	178	300	142	752
ZKEW-U30R	1230 (1)	221	277	500	221	1096	162	302	350	162	871
ZKEW-U36R	2233 (1)	254	317	500	254	1226	186	233	400	186	975
ZKEW-U38T	1220 (2)	243	273	350	121	608	174	196	250	87	484
ZKEW-U40T	1222 (2)	304	342	450	152	771	214	241	320	107	613
ZKEW-U41R	2236 (1)	293	367	600	293	1462	211	264	400	211	1163
ZKEW-U46R	2246 (1)	335	419	700	335	1752	235	294	500	235	1393
ZKEW-U46T	1222 (2)	328	369	500	164	771	238	268	350	119	613
ZKEW-U50T	1222 (1)				194	771				118	613
	1227 (1)	358	407	600	164	946	258	293	400	140	752
ZKEW-U54T	1227 (2)	391	440	600	195	946	282	317	400	141	752
ZKEW-U57T	1227 (1)				221	946				141	752
	1230 (1)	416	471	700	195	1096	302	342	450	161	871
ZKEW-U60T	1230 (2)	442	497	700	221	1096	320	360	500	160	871
ZKEW-U73T	2233 (2)	510	574	800	255	1226	372	419	500	186	975
ZKEW-U75T	2233 (1)				295	1226				185	975
	2236 (1)	550	623	800	255	1462	396	449	630	211	1163
ZKEW-U81T	2236 (2)	589	663	800	295	1462	422	475	630	211	1163
ZKEW-U87T	2236 (1)				334	1462				205	1163
	2246 (1)	627	710	1000	293	1752	443	503	700	238	1393
ZKEW-U90T	2246 (2)	669	753	1000	335	1752	476	536	700	238	1393

Notes: 1.) RLA – Rated Load Amps      MCA – Minimum Circuit Amps      MFS – Maximum Fuse Size      LRA – Locked Rotor Amps  
 2.) The above data are are for Superior models, which rated in accordance with AHRI Standard 550/590 (I-P)-2015 at standard conditions.

### 2.3.3 Sound Pressure Data

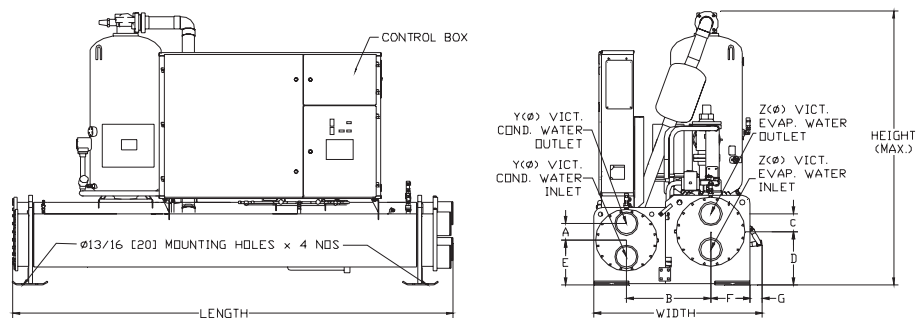
Model ZKEW-U	Octave Band (Hz)								Total dB (A)
	63	125	250	500	1000	2000	4000	8000	
ZKEW-U19R	68	57	63	68	75	72	72	54	79
ZKEW-U20R	68	57	63	68	75	72	72	54	79
ZKEW-U23R	68	57	63	68	75	72	72	54	79
ZKEW-U24R	69	59	64	68	76	73	74	56	80
ZKEW-U27R	69	59	64	68	76	73	74	56	80
ZKEW-U30R	70	61	65	69	78	75	74	59	81
ZKEW-U36R	72	63	67	71	80	77	76	61	83
ZKEW-U38T	70	59	65	70	77	74	74	56	81
ZKEW-U40T	70	59	65	70	77	74	74	56	81
ZKEW-U41R	72	63	67	71	80	77	76	61	83
ZKEW-U46R	73	64	68	72	81	78	77	62	85

Model ZKEW-U	Octave Band (Hz)								Total dB (A)
	63	125	250	500	1000	2000	4000	8000	
ZKEW-U46T	70	59	65	70	77	74	74	56	81
ZKEW-U50T	71	60	66	70	78	75	75	57	82
ZKEW-U54T	71	61	66	70	78	75	76	58	82
ZKEW-U57T	71	62	66	70	79	76	76	60	83
ZKEW-U60T	72	63	67	71	80	77	76	61	83
ZKEW-U73T	74	65	69	73	82	79	78	63	85
ZKEW-U75T	74	65	69	73	82	79	78	63	85
ZKEW-U81T	74	65	69	73	82	79	78	63	85
ZKEW-U87T	74	65	69	73	82	79	78	63	86
ZKEW-U90T	75	66	70	74	83	80	79	64	87

Note: Sound Pressure Level dB(A) @ 3.3ft [1m] (free field) ± 2dB(A).

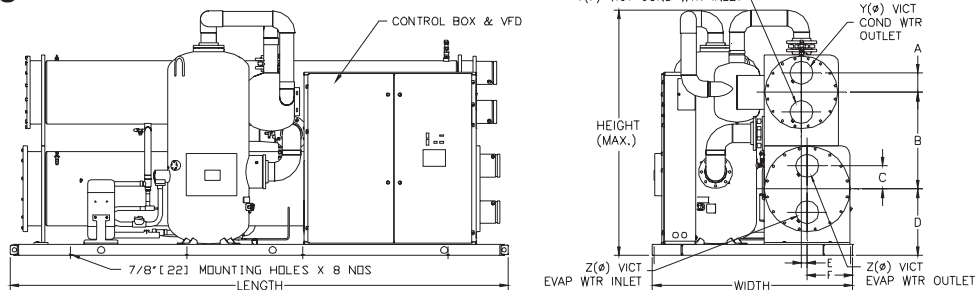
# DIMENSIONAL DATA

## ZKEW-U



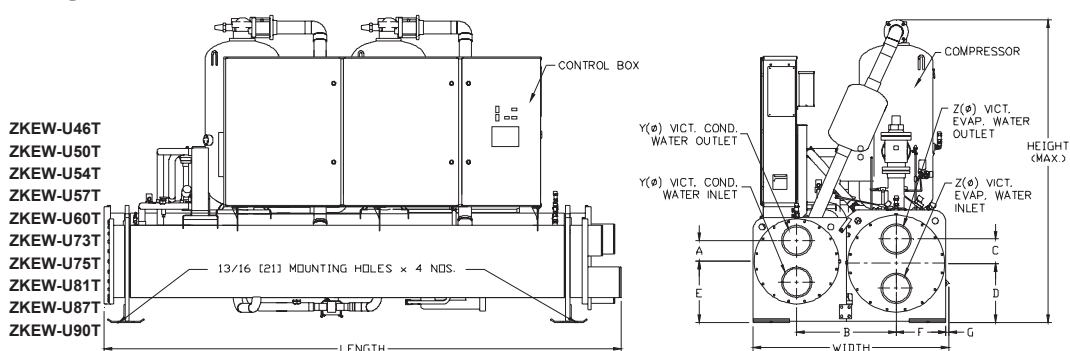
Model ZKEW-U	Evap.	Cond.	Dimensions- inches [mm]										Water Connector - inches	
			Length	Width	Height	A	B	C	D	E	F	G	YØ	ZØ
ZKEW-U19R	FAR	D2R	117 7/8 [2990]	56 1/16[1420]	99 [2520]	5 5/8 [143]	29 1/4 [743]	6 7/8 [175]	19 3/16 [487]	15 1/4 [387]	13 1/4 [337]	2 7/16 [62]	6	8
ZKEW-U20R	EAR	5BR	149 7/8 [3810]	53 3/8[1360]	99 [2520]	5 5/8 [143]	27 3/8 [695]	5 5/8 [143]	18 3/16 [462]	15 1/4 [387]	12 3/8 [314]	2 1/2 [64]	6	6
ZKEW-U23R	JAR	5BR	149 7/8 [3810]	55 5/8[1410]	99 [2520]	5 5/8 [143]	29 3/16 [742]	6 7/8 [175]	19 3/16 [487]	15 1/4 [387]	13 3/8 [400]	1 15/16 [49]	6	8
ZKEW-U24R	JBR	5CR	149 7/8 [3810]	55 5/8[1410]	99 [2520]	5 5/8 [143]	29 3/16 [742]	6 7/8 [175]	19 3/16 [487]	15 1/4 [387]	13 3/8 [400]	1 15/16 [49]	6	8
ZKEW-U27R	6DR	6CR	150 3/8 [3820]	56 1/8[1430]	99 [2520]	5 5/8 [143]	29 [737]	6 7/8 [175]	20 3/16 [513]	15 1/4 [387]	14 1/2 [368]	1 1/2 [38]	6	8
ZKEW-U30R	6ER	1KR	156 1/8 [3970]	57 1/8[1450]	99 [2520]	6 1/16 [155]	28 13/16[732]	6 7/8 [175]	20 3/16 [513]	16 1/4 [412]	14 7/16 [367]	1 1/2 [38]	8	8

## ZKEW-U



Model ZKEW-U	Evap.	Cond.	Dimensions- inches [mm]										Water Connector - inches	
			Length	Width	Height	A	B	C	D	E	F	YØ	ZØ	
ZKEW-U36R	7CR	RAR	174 3/16 [4430]	70 [1780]	92 1/8 [2340]	6 7/8 [175]	35 1/4 [895]	8 1/8 [207]	24 5/16 [618]	2 [51]	15 7/8 [403]		8	8
ZKEW-U41R	7BR	M1R	174 3/16 [4430]	70 [1780]	94 1/8 [2390]	6 7/8 [175]	36 1/4 [920]	7 3/8 [187]	24 5/16 [618]	1 [25]	15 7/8 [403]		10	10
ZKEW-U46R	8DR	M5R	174 3/16 [4430]	75 [1910]	97 [2460]	6 7/8 [175]	37 5/16 [948]	8 1/8 [207]	26 5/16 [669]	2 [51]	20 [508]		10	10

## ZKEW-U



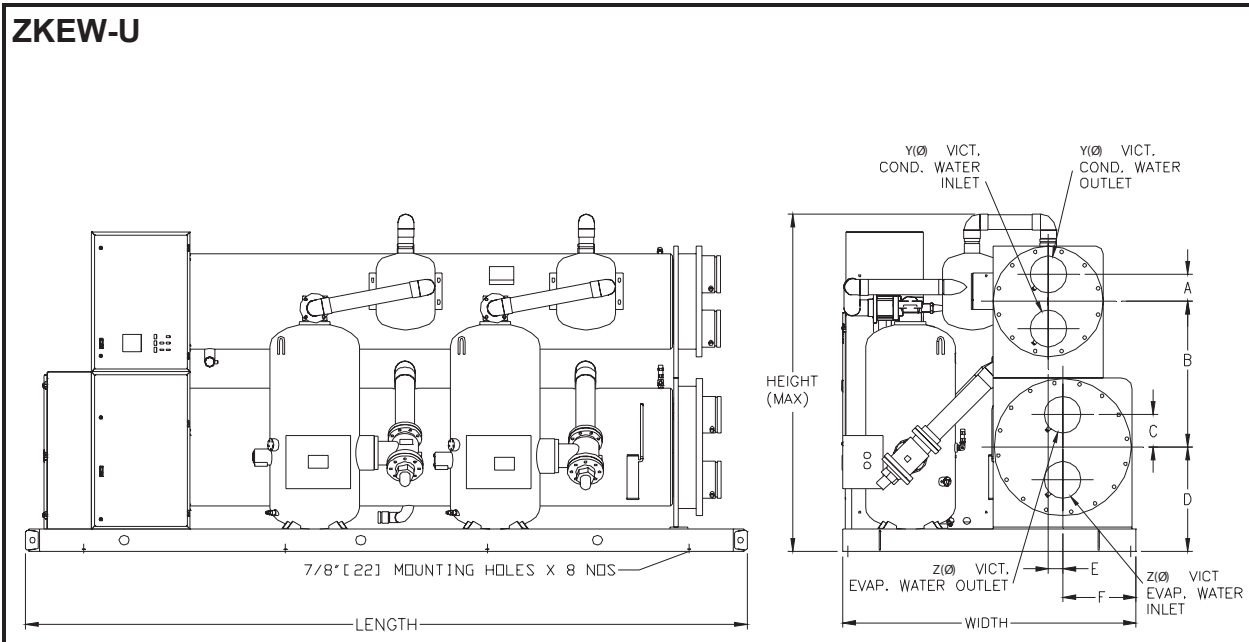
Model ZKEW-U	Evap.	Cond.	Dimensions- inches [mm]										Water Connector - inches	
			Length	Width	Height	A	B	C	D	E	F	G	YØ	ZØ
ZKEW-U38T	6CR	K5R	169 1/8 [4300]	56 15/16[1450]	99 [2520]	6 1/16 [153]	28 13/16 [732]	6 7/8 [175]	20 1/4 [514]	16 1/4 [413]	14 7/16 [367]	1 5/16 [33]	8	8
ZKEW-U40T	8BR	M3R	170 5/8 [4330]	63 11/16[1620]	99 [2520]	6 7/8 [175]	32 13/16 [833]	8 1/8 [207]	19 1/2 [495]	20 1/4 [515]	16 7/16[418]	-	10	10
ZKEW-U46R	8DR	M5R	170 5/8 [4330]	64 11/16[1640]	99 [2520]	6 7/8 [175]	32 13/16 [833]	8 1/8 [207]	19 7/16 [494]	20 3/16 [513]	16 7/16[418]	1 [25]	10	10

Notes: 1.) Above drawings and dimensions are for Superior models with vessels construction based on flat head and comply with PED/ Chinese Machinery codes.

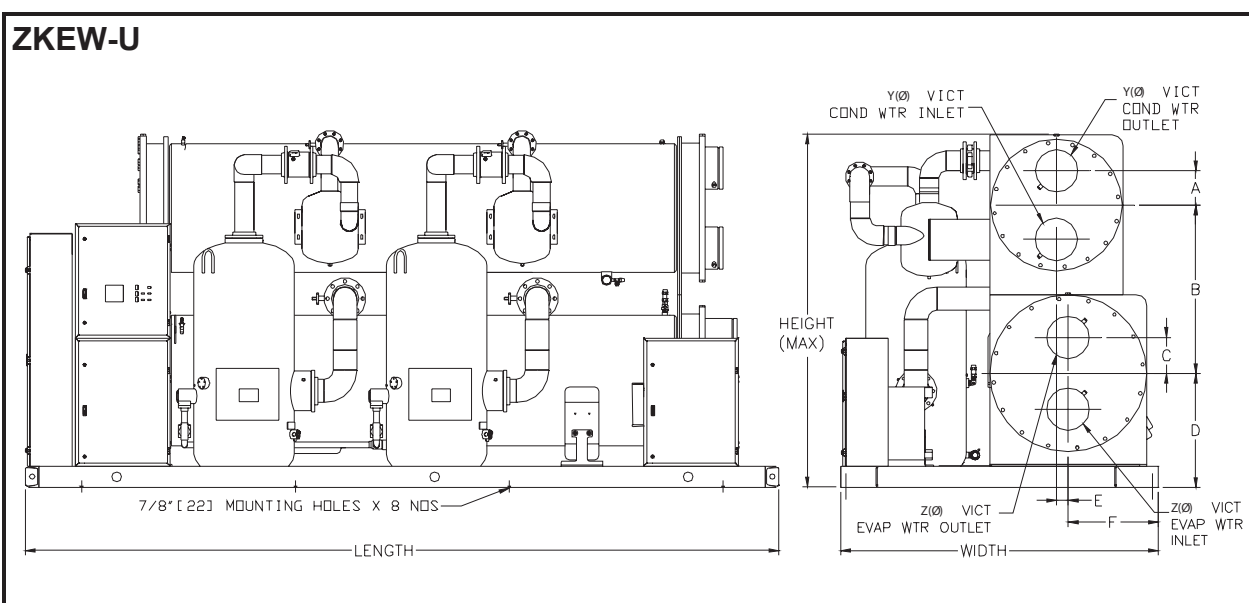
2.) Unit layout shown are for reference only. Some orientations may vary.

3.) Please consult factory for the details of the unit with UL certified VFD, and vessels with ASME / other approvals.

# DIMENSIONAL DATA



Model ZKEW-U	Evap.	Cond.	Dimensions- inches [mm]									Water Connector – inches	
			Length	Width	Height	A	B	C	D	E	F	YØ	ZØ
ZKEW-U50T	KBR	T5R	196 3/4 [5000]	80 [2030]	96 [2440]	6 7/8 [175]	36 3/4 [934]	8 1/8 [207]	27 5/16 [694]	3 [76]	20 [508]	10	10
ZKEW-U54T	YAR	YAR	196 3/4 [5000]	80 [2030]	97 [2460]	7 3/8 [187]	39 11/16 [1008]	8 7/8 [226]	28 5/16 [719]	3 7/8 [99]	20 [508]	10	10
ZKEW-U57T	YBR	YBR	196 3/4 [5000]	80 [2030]	97 [2460]	7 3/8 [187]	39 11/16 [1008]	8 7/8 [226]	28 5/16 [719]	3 7/8 [99]	20 [508]	10	10
ZKEW-U60T	YCR	YCR	196 3/4 [5000]	80 [2030]	97 [2460]	7 3/8 [187]	39 11/16 [1008]	8 7/8 [226]	28 5/16 [719]	3 7/8 [99]	20 [508]	10	10



Model ZKEW-U	Evap.	Cond.	Dimensions- inches [mm]									Water Connector – inches	
			Length	Width	Height	A	B	C	D	E	F	YØ	ZØ
ZKEW-U73T	MAR	JAR	206 11/16 [5250]	88 3/16 [2240]	99 3/16 [2520]	8 [203]	40 13/16 [1036]	10 3/16 [258]	29 5/16 [744]	3 1/4 [82]	24 1/2 [622]	12	12
ZKEW-U75T	MBR	JBR	206 11/16 [5250]	88 3/16 [2240]	99 3/16 [2520]	8 [203]	40 13/16 [1036]	10 3/16 [258]	29 5/16 [744]	3 1/4 [82]	24 1/2 [622]	12	12
ZKEW-U81T	NAR	KAR	206 11/16 [5250]	88 3/16 [2240]	96 1/16 [2440]	8 1/8 [207]	48 [1219]	10 1/8 [257]	30 1/4 [769]	4 1/4 [108]	24 1/2 [622]	12	12
ZKEW-U87T	PAR	7CR	213 3/4 [5430]	90 3/16 [2290]	98 13/16 [2510]	9 3/4 [248]	49 [1144]	10 3/16 [259]	32 5/16 [821]	5 1/4 [133]	25 1/2 [648]	12	12
ZKEW-U90T	PAR	8AR	213 3/4 [5430]	90 3/16 [2290]	98 13/16 [2510]	9 3/4 [248]	47 3/4 [1213]	10 3/16 [259]	32 5/16 [821]	3 3/8 [86]	25 1/2 [648]	12	12

Notes: 1.) Above drawings and dimensions are for Superior models with vessels construction based on flat head and comply with PED/ Chinese Machinery codes.

2.) Unit layout shown are for reference only. Some orientations may vary.

3.) Please consult factory for the details of the unit with UL certified VFD, and vessels with ASME / other approvals.